

# ALNICO RAID 7 Series 3U 16-Bay

## 4Gb FC to SATA-II RAID Subsystems

### Overview

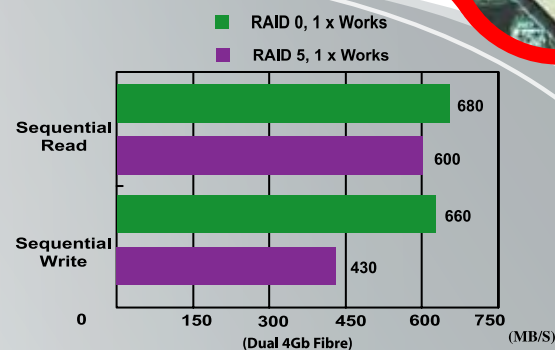
Innovative generation Alnico 7 series RAID implements the interfaces of two 4 Gb FC hosts to SATA-II hard drives. The highlighted RAID controller performance features the advanced technology PowerPC 440SP CPU to support ultimate RAID 6 function. The emphasized dual 64-bit PCI-X buses extremely strengthen and upgrade the read / write to the extent of superior performance.



### Exceptional Performance

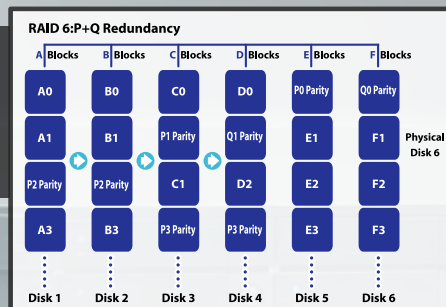
- Noticeable performance from a 64-bit PowerPC 440SP storage Processor based controller

- Up to 2 GB DDR-II 667 SDRAM on one DIMM socket with ECC protection
- Two 4Gb Fibre host ports allow for multiple connections to a single host for the high speed data transfer, or support for multiple hosts for clustering or sharing.
- Designed to use 3Gbps SATA-II disk drives
- Proprietary PCI-X 2.0 ASIC to implement highest performance RAID 6 function
- Featuring dual 64-bit 133MHz data buses make the high data throughput.



### What is RAID 6 ?

A RAID 6 is essentially an extension of a RAID 5 by providing two parity codes for each stripe of data. Meaning two concurrent drive failures can be sustained with no loss of data, providing enhanced data protection as compared with single-parity RAID subsystems.



### Continuous Availability & High Reliability

- Modular Design: disk drive, cooling fan module, LCD, switch, power supply unit, and RAID controller are modules. It allows easily swapping out faulty parts to shorten downtime.

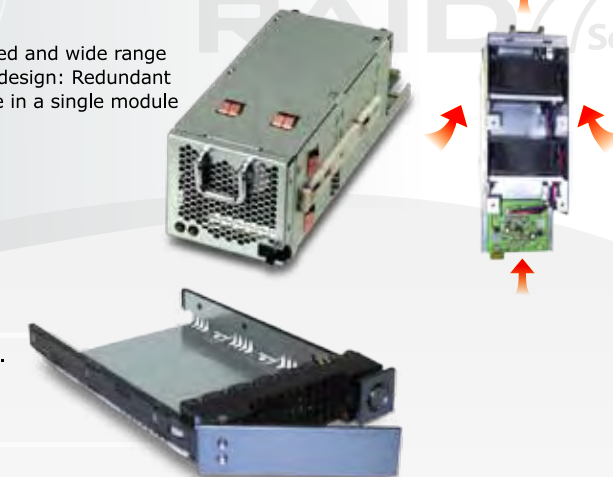


### Continuous Availability & High Reliability

- The power supply units and cooling fan modules are both redundant and hot-swappable.
- High quality dual 460 watts power supply modules support PFC



- Advanced and wide range airflow design: Redundant fans are in a single module



- Optional Battery Backup module preserves cache contents from power failure.
- Support for S.M.A.R.T & NCQ & OOB Staggered Spin-Up capable drives
- Auto-Latch Lock: Two simple steps to remove the hard drive tray. This creative concept is designed to avoid accidental removal.**

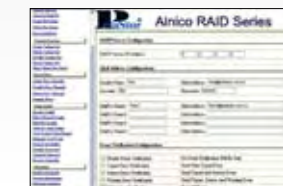
### Easy RAID Management

#### Configuration & Health Monitoring

- Manual configuration and monitoring can be done through the front LCD keypad panel.
- The Web Browser-based manager allows local or remote to access it from any standard internet browser via a LAN or WAN with on specific software or patches required.
- Remote monitoring via RS-232 port



#### Events Notification



- The firmware includes SMTP manager, it monitors all system events and users can select either single or multiple user notifications to be sent via e-mails.
- The firmware-embedded SNMP agent allows remote to monitor events via LAN without SNMP agent.
- The warning messages will show on the LCD, alarm buzzer, and respect LED

Mode	AL-7121F-S	AL-7161F
Controller Numbers	1	1
RAID Architecture	<ul style="list-style-type: none"> <li>PowerPC 440SP 64bits processor</li> <li>Proprietary PCI-X 2.0 Polynomial ASIC to support extreme performance RAID 6 function</li> </ul>	<ul style="list-style-type: none"> <li>Up to 2GB DDR-II 667 SDRAM on one DIMM socket with ECC protection</li> <li>Advanced Dual 133MHz / 64-bit PCI-X buses architecture</li> <li>NVRAM and Real Time Clock supported</li> </ul>
RAID Features	<ul style="list-style-type: none"> <li>RAID levels 0, 1, 3, 5, 0+1, 6 &amp; JBOD</li> <li>Multiple RAID selections</li> <li>Online RAID level / stripe size migration</li> <li>Online Array roaming</li> <li>Online capacity expansion and RAID level migration simultaneously</li> <li>Online Volume set Expansion</li> </ul>	<ul style="list-style-type: none"> <li>Instant availability and background initialization</li> <li>Greater than 2TB per volume set ( 64-bit LBA/ 4K bytes/sector for Windows)</li> <li>Hot Spare Disk / Pass through Disk supported</li> <li>Support S.M.A.R.T &amp; NCQ &amp; OOB Staggered Spin-Up capable drives</li> <li>Automatic drive insertion / removal detection and rebuild</li> </ul>
System Type	2U Rackmount	3U Rackmount
Host Interface	Dual 4Gbps Fibre Channels	
Disk interface	12 of SATA II channels	16 of SATA II channels
Battery backup Module	Optional, supporting 72 hours battery backup time	
RAID Management	Firmware-embedded Web browser-Based RAID manager via built-in 10/100 Ethernet port Firmware-embedded manager via RS-232 port Firmware-embedded manager through front LCD control panel Field-upgradeable firmware in flash ROM	
Monitoring /Indicators	All system status can be monitored via Firmware-embedded Web Browser-based RAID manager System status indication through LCD, LED and alarm buzzer All system events can be sent to multiple user alerts via e-mails Firmware-embedded SNMP agent allows remote to monitor events through LAN with no SNMP agent required	
Operating System	OS independent and transparent	
Power Supply	Redundant by Dual 350W Power modules with PFC feature, Loading Sharing type and cable-less design	Redundant by Dual 460W Power modules with PFC feature, Loading Sharing type and cable-less design
Electrical	AC Voltage 110-230 VAC/AC Frequency 50-60Hz	
Temperature	Operating Temperature: 5 to 35 degree C. Non Operating Temperature: -40 to 60 degree C	
Relative Humidity	20% to 80% non-condensing	
Dimension	446.5mm(W) x 527mm(D) x 2U	446.5mm(W) x 520mm(D) x 3U
Weight	20KGS(W/O HDD)	

\* Specification subject to change without notice.